

**PNP Antibody (Center)**  
**Purified Rabbit Polyclonal Antibody (Pab)**  
**Catalog # AP20740c**

**Specification**

---

**PNP Antibody (Center) - Product Information**

Application	WB,E
Primary Accession	<a href="#">P00491</a>
Reactivity	Human
Host	Rabbit
Clonality	Polyclonal
Isotype	Rabbit IgG
Calculated MW	32118

**PNP Antibody (Center) - Additional Information**

**Gene ID** 4860

**Other Names**

Purine nucleoside phosphorylase, PNP, Inosine phosphorylase, Inosine-guanosine phosphorylase, PNP, NP

**Target/Specificity**

This PNP antibody is generated from a rabbit immunized with a KLH conjugated synthetic peptide between 145-178 amino acids from the Central region of human PNP.

**Dilution**

WB~~1:1000

E~~Use at an assay dependent concentration.

**Format**

Purified polyclonal antibody supplied in PBS with 0.09% (W/V) sodium azide. This antibody is purified through a protein A column, followed by peptide affinity purification.

**Storage**

Maintain refrigerated at 2-8°C for up to 2 weeks. For long term storage store at -20°C in small aliquots to prevent freeze-thaw cycles.

**Precautions**

PNP Antibody (Center) is for research use only and not for use in diagnostic or therapeutic procedures.

**PNP Antibody (Center) - Protein Information**

**Name** PNP

**Synonyms** NP

**Function** Catalyzes the phosphorolytic breakdown of the N-glycosidic bond in the beta-(deoxy)ribonucleoside molecules, with the formation of the corresponding free purine bases and pentose-1-phosphate (PubMed:[23438750](#), PubMed:[9305964](#)). Preferentially acts on 6-oxopurine nucleosides including inosine and guanosine (PubMed:[9305964](#)).

#### Cellular Location

Cytoplasm.

#### Tissue Location

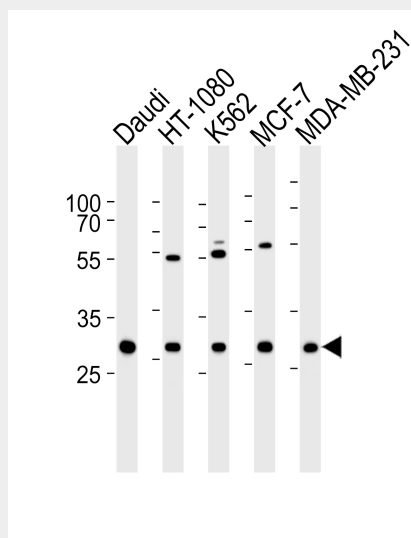
Expressed in red blood cells; overexpressed in red blood cells (cytoplasm) of patients with hereditary non-spherocytic hemolytic anemia of unknown etiology.

### PNP Antibody (Center) - Protocols

Provided below are standard protocols that you may find useful for product applications.

- [Western Blot](#)
- [Blocking Peptides](#)
- [Dot Blot](#)
- [Immunohistochemistry](#)
- [Immunofluorescence](#)
- [Immunoprecipitation](#)
- [Flow Cytometry](#)
- [Cell Culture](#)

### PNP Antibody (Center) - Images



Western blot analysis of lysates from Daudi, HT-1080, K562, MCF-7, MDA-MB-231 cell line (from left to right), using PNP Antibody (Center)(Cat. #AP20740c). AP20740c was diluted at 1:1000 at each lane. A goat anti-rabbit IgG H&L(HRP) at 1:5000 dilution was used as the secondary antibody. Lysates at 35ug per lane.

### PNP Antibody (Center) - Background

The purine nucleoside phosphorylases catalyze the phosphorolytic breakdown of the N-glycosidic bond in the beta- (deoxy)ribonucleoside molecules, with the formation of the corresponding free purine bases and pentose-1-phosphate.

**PNP Antibody (Center) - References**

Williams S.R.,et al.Nucleic Acids Res. 12:5779-5787(1984).  
Williams S.R.,et al.J. Biol. Chem. 262:2332-2338(1987).  
Yu L.,et al.Environ. Health Perspect. 111:1421-1427(2003).  
Ota T.,et al.Nat. Genet. 36:40-45(2004).  
Ebert L.,et al.Submitted (MAY-2004) to the EMBL/GenBank/DDBJ databases.